

ADV. ILLUSTRATION IN GD 40S // BIRD'S - EYE VIEW

A BIRD'S-EYE VIEW is an elevated view of an object from above, with a perspective as though the observer were a bird, often used in the making of blueprints, floor plans, and maps. It can be an aerial photograph, but also a drawing. Bird's eye views as a genre have existed since classical times.

For this assignment students are select a bird's-eye view perspective photograph for the purpose of hand rendering that image showing as much detail as possible. For the size of the photo compared to the size of the paper: Select a section of the image and resize the hand rendered perspective drawing to fit the size of the 8.5x11in LANDSCAPE or PORTRAIT sheet of paper, show as much detail as possible.

INSTRUCTIONS

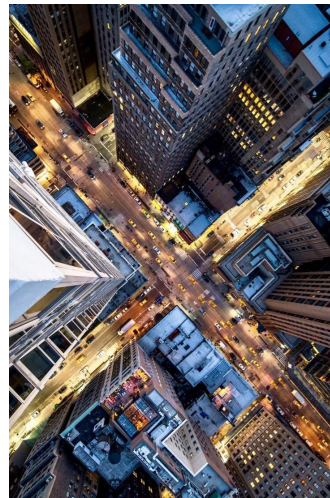
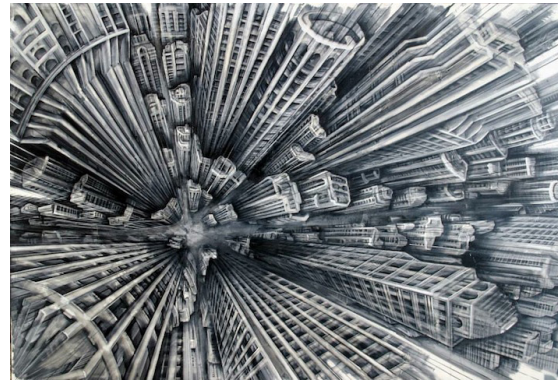
MEDIUM: Pencil or Ball Point Pen. (Not RED)

SIZE: 8.5x11in (LANDSCAPE or PORTRAIT)

- Research online and select a BIRD'S-EYE VIEW CITY PHOTOGRAPHY image to handrender.
- Show as much detail as possible.
- Illustration must be completed in either pencil or ball point pen.
- Mount final illustration on black mounting board.

HAND IN

- Final mounted illustration along with the bird's-eye view perspective city photo.



COLOUR AND CONTRAST

/5

This portion of the mark represents how well colour and contrast have been considered and implemented.

CRAFTSMANSHIP

/10

This portion of the mark is an evaluation of effort, care and attention to detail for the assignment.

CREATIVITY

/5

This portion of the mark represents how well thought out the students idea was for the assignment.

ILLUSTRATION PROBLEM SOLUTION

/10

This portion of the mark represents how well the students solution solves a illustration problem posed in the assignment, and fulfils specific assigned requirements.

TOTAL

/30

